

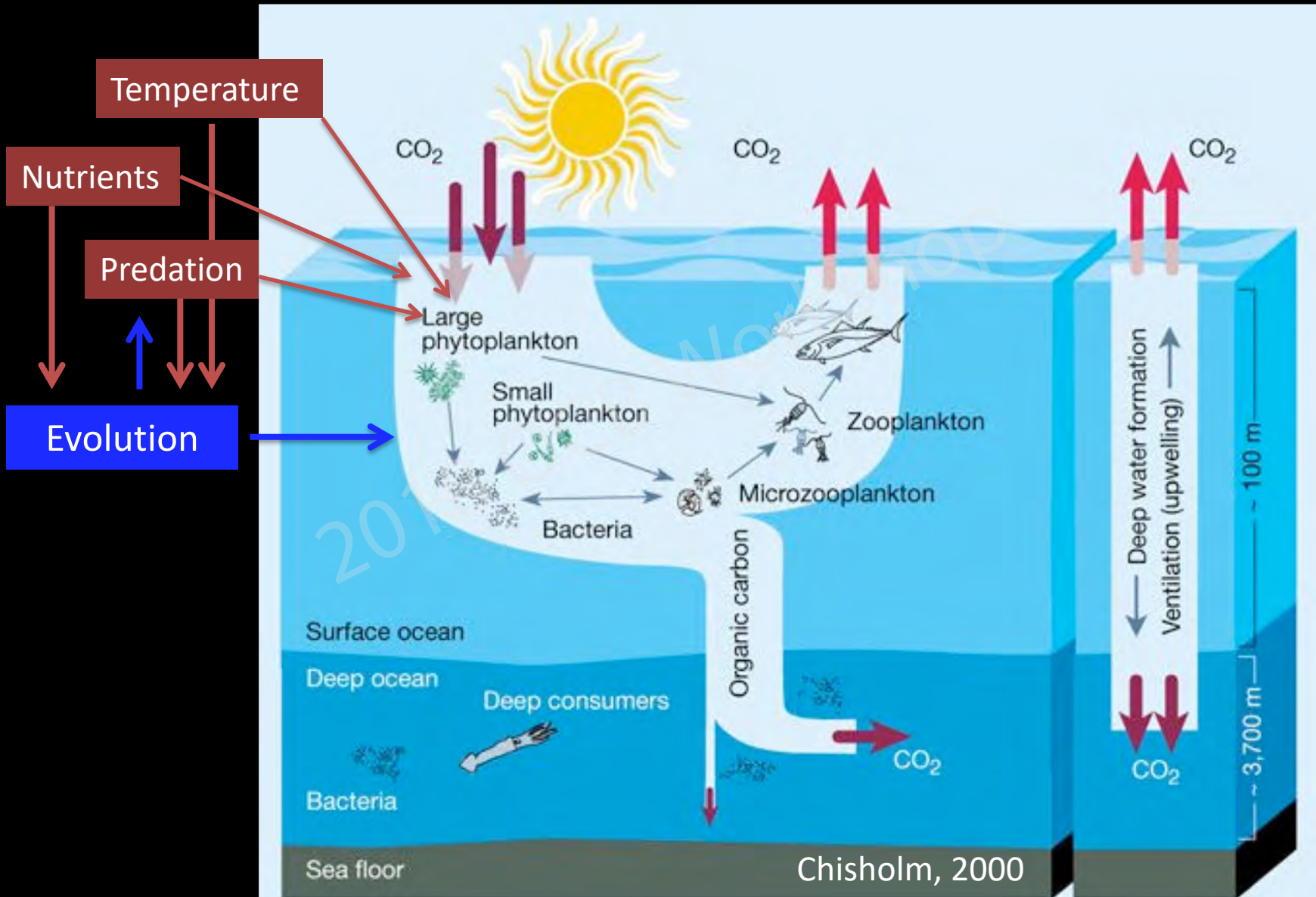
# A field guide to contemporary evolution in the plankton:



The importance of knowing (at least glancingly) that evolution is hard at work

Tatiana Rynearson  
University of Rhode Island, Graduate School of  
Oceanography

# Carbon Cycling: The biological pump

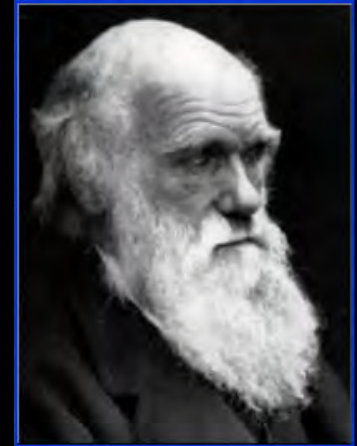


# The main ingredients....

Recombination



Selection



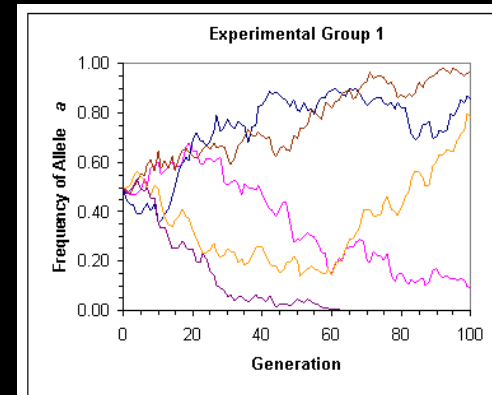
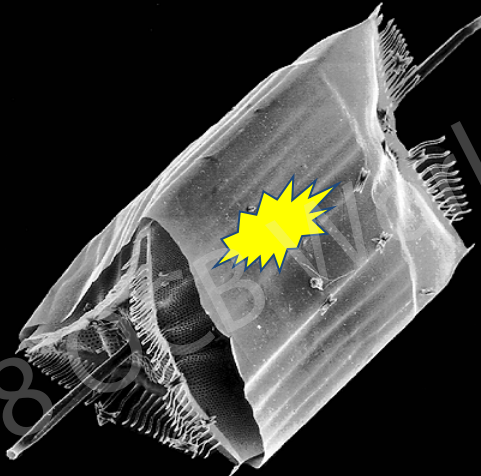
Migration



Mutation



Genetic Drift



# Roadmap to this morning's session

## Experimental Evolution in the lab

- Controlled selection
- Types and rates of mutation
- Measure fitness

Single species (SCHAUM)

Species interactions (MORRIS)



## Spatio-temporal patterns of contemporary evolution

- “Standing stock” of diversity
- Results of selection

Single species (RYNEARSON)

Emergent “species” in silico (COLES)

