

The background of the slide features a large, light blue, semi-transparent seal of the Woods Hole Oceanographic Institution (WHOI). The seal is circular and contains a detailed illustration of a three-masted sailing ship on the left and a large, stylized eagle with spread wings on the right. The words "WOODS HOLE OCEANOGRAPHIC INSTITUTION" are inscribed around the perimeter of the seal.

# WHOI STRATEGIC FACILITY ASSESSMENT

27 February 2018

# WHOI Institutional Identity

**1** institution   **2** campuses   **5** districts



“The **ocean** is at  
the center of  
**what we do** and  
**where we are...**”



# Strategic Facilities Assessment (SFA) Objectives

The goal of the SFA is to determine what we need and will need to move WHOI into the future.

## **OBJECTIVES IN SUPPORT OF A FINANCIALLY SUSTAINABLE RESEARCH ENTERPRISE:**

1. Effective use of existing space
2. Improve affinities and collaboration potential
3. Link deferred maintenance to program enhancement
4. Develop effective land use strategies
5. Explore collaboration with other institutions
6. Flexibility for the future
7. Energy use and sustainability

# WHOI by the Numbers



875,903 SF  
of BUILDING

61 buildings  
+ trailers

180  
acres

5 DEPARTMENTS

85  
years  
INCORPORATED

102  
LABS +  
groups

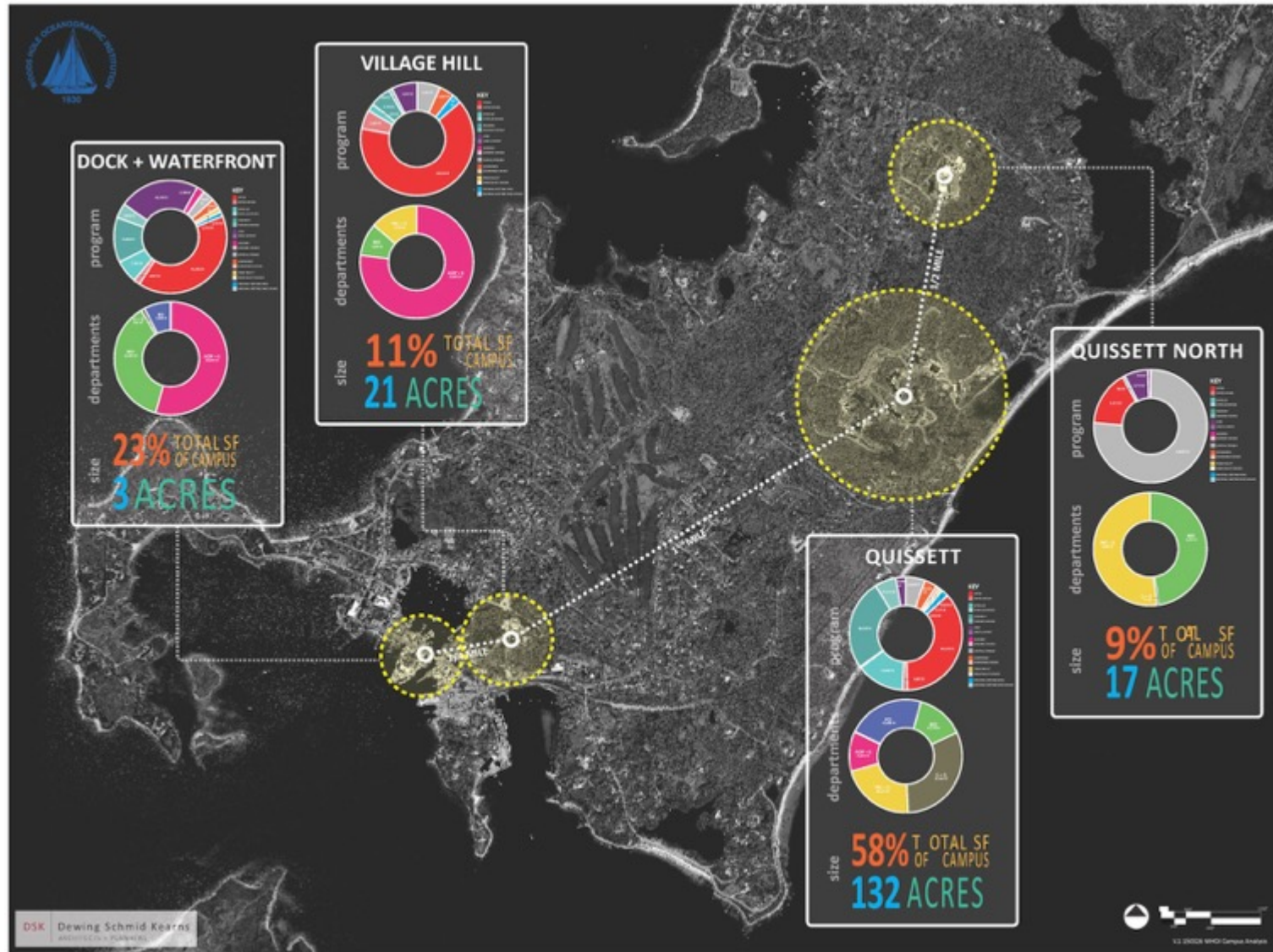
12 - 18 SERVICE CENTERS

1,450 EMPLOYEES

? vans +  
shipping containers

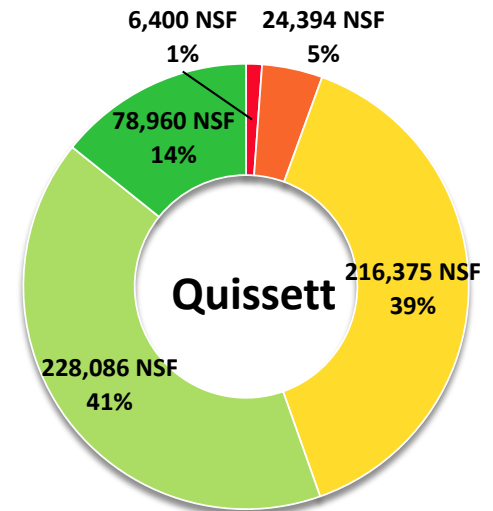
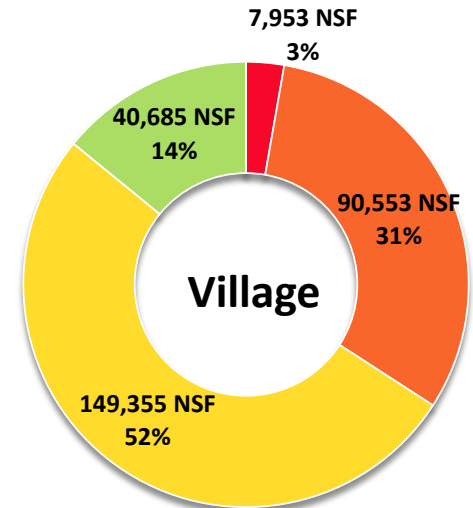
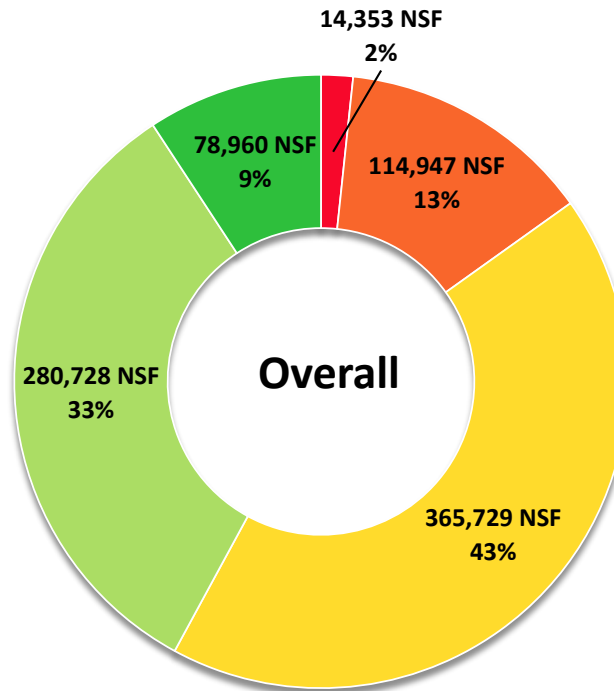
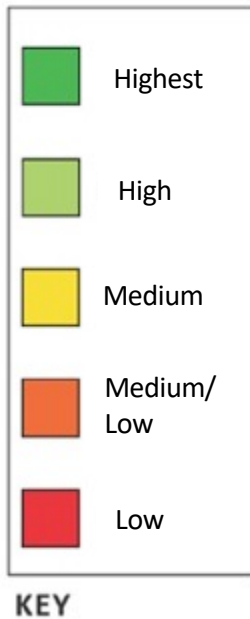
2,865  
linear feet of  
WATERFRONT

# WHOI Facilities





# WHOI Facility Condition Index



# SFA Tier 1 Planning Drivers

The goal of the SFA is to determine what we need and will need to move WHOI into the future.

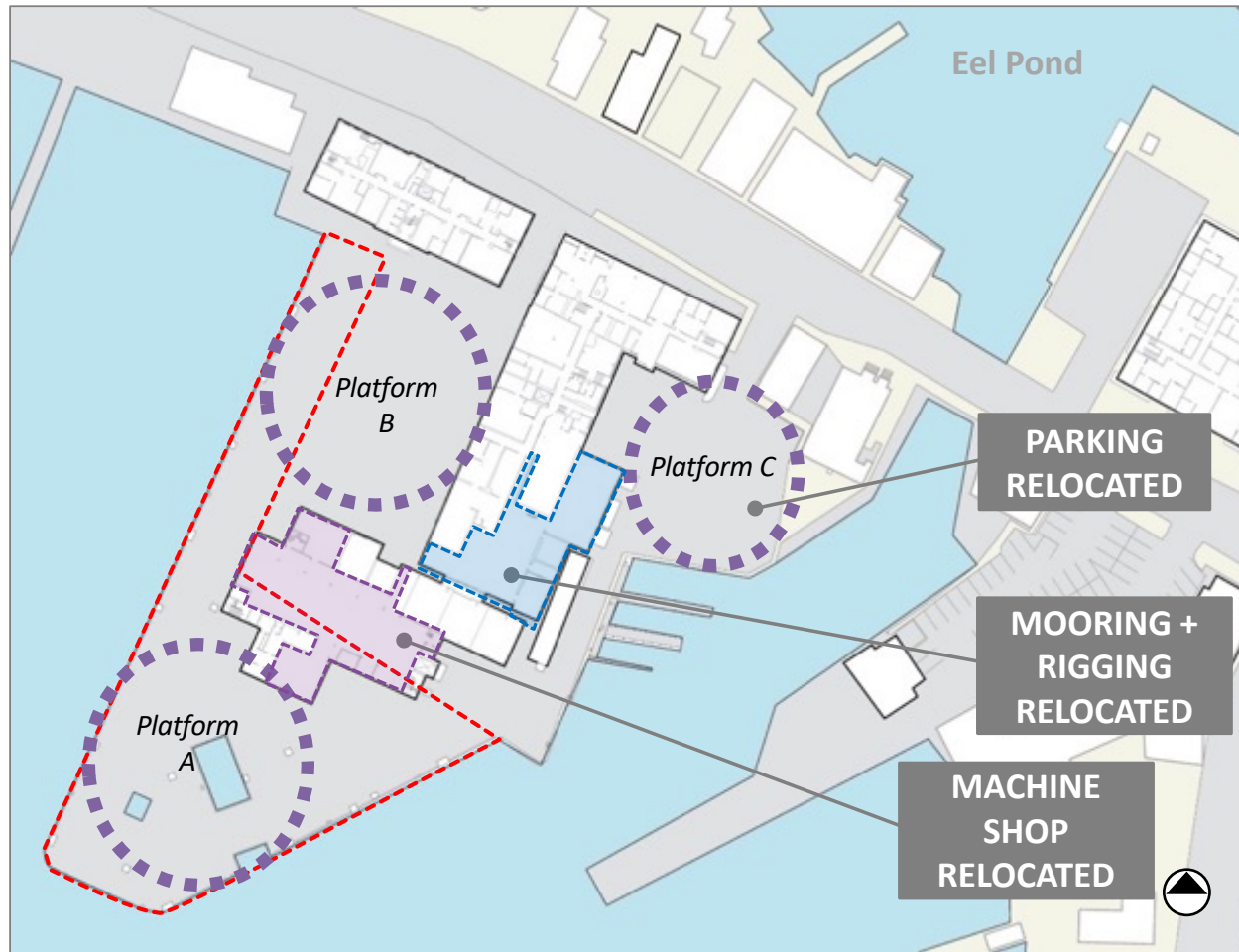
1 Waterfront

2 Quissett Campus

3 Village Campus



# 1. Waterfront



“The **ocean** is at the center of **what we do** and **where we are...**”

## OBJECTIVES

1. Enable replacement of the Main Dock to continue to support ships and research initiatives
2. Relocate Mooring + Rigging and Machine Shop from Main Dock
3. Relocate parking



## 2. Quissett Campus



### OBJECTIVES

1. New Quissett Facility to Relocate Mooring + Rigging and Machine Shop from Main Dock
2. Evaluate 50-75 year land-use strategies for the Quissett Campus

### 3. Village Campus





# WHOI Village Campus- Existing Conditions



# WHOI Village Campus- Existing Conditions





# WHOI Village Campus- Existing Conditions





# WHOI Village Campus- Existing Conditions





# WHOI Village Campus- Existing Conditions





# WHOI Village Campus- Concept





# WHOI Village Campus- Existing Conditions





# WHOI Village Campus- Concept

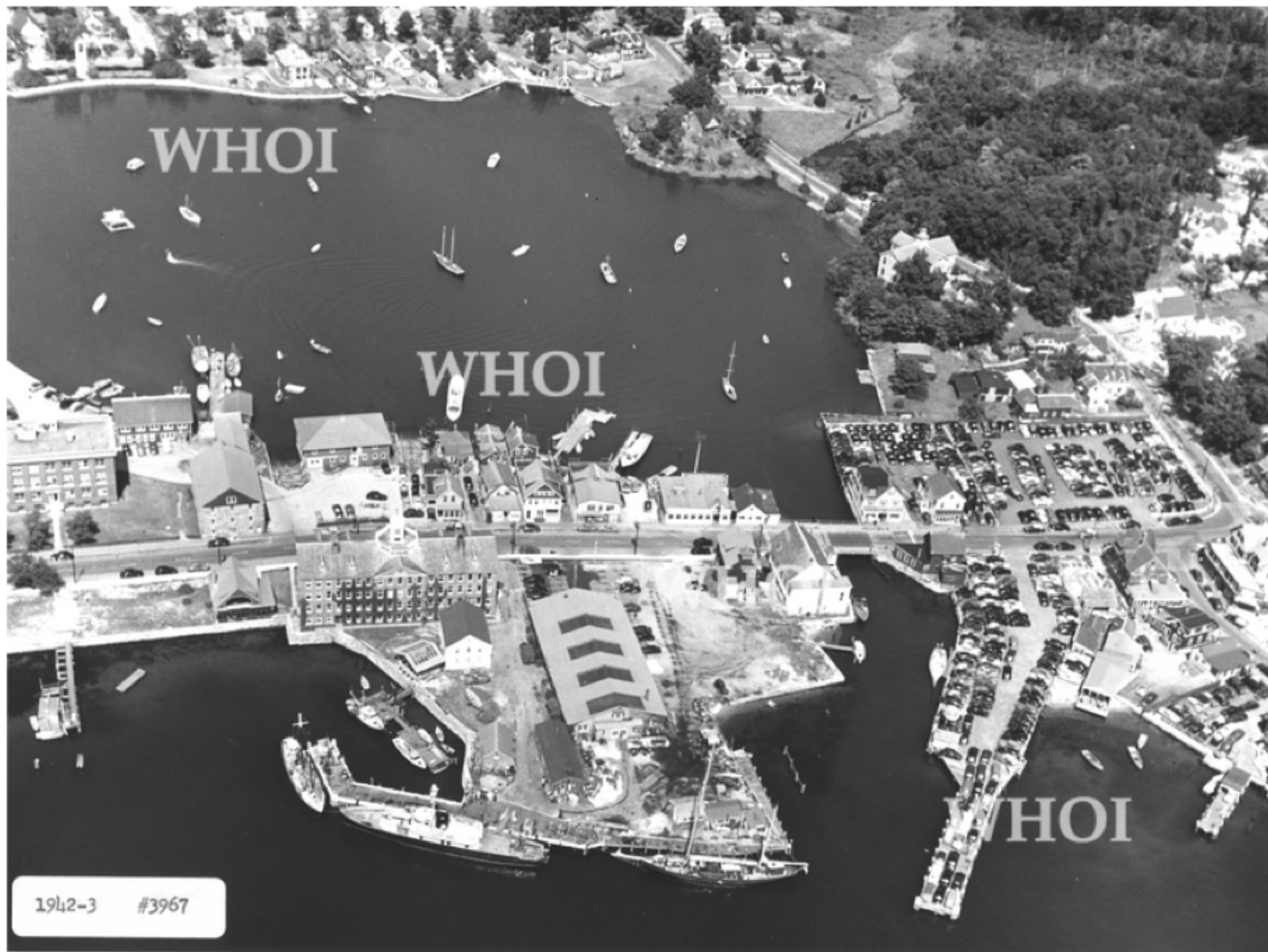




# WHOI Village Campus- Proposed

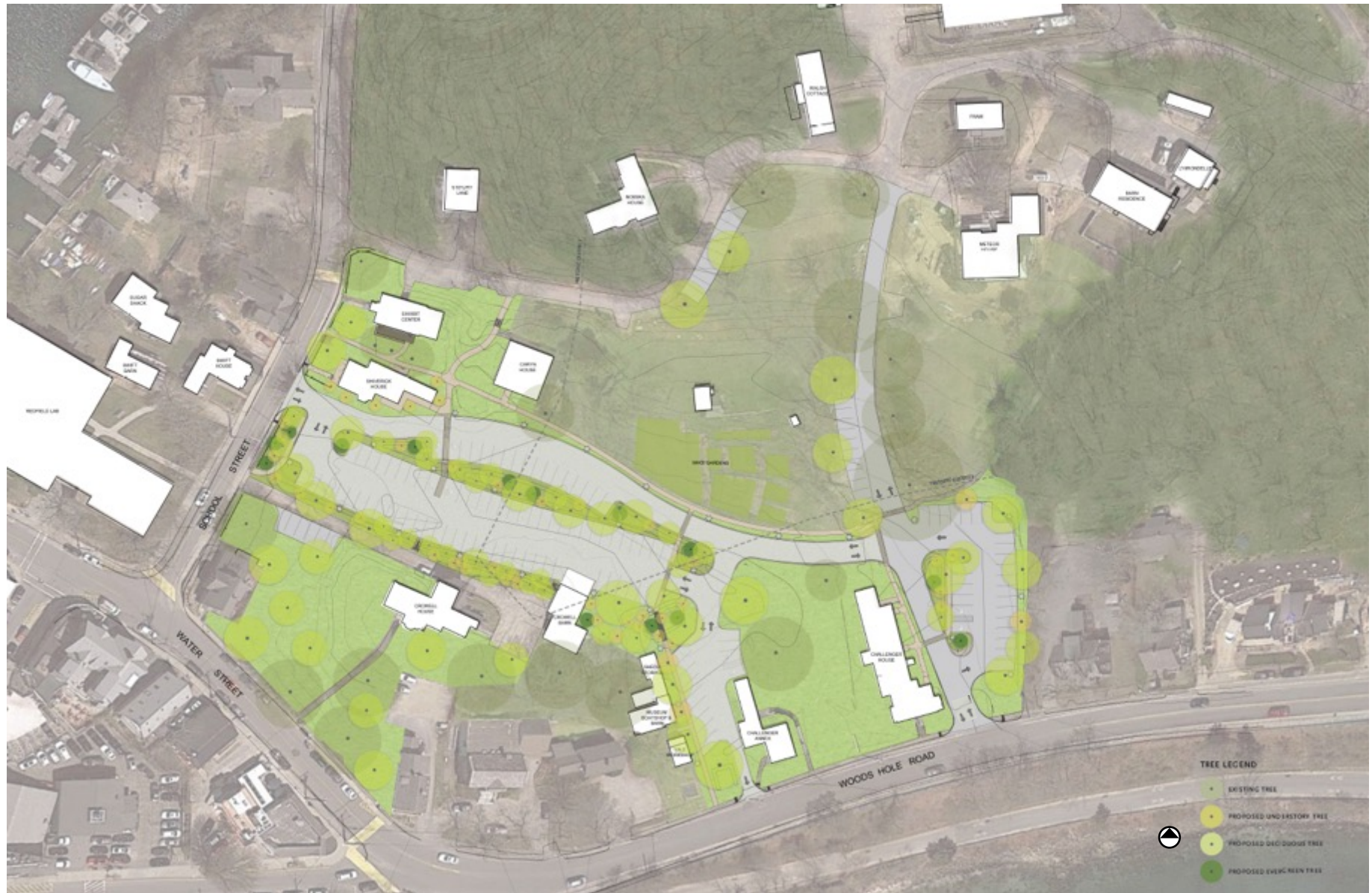


# WHOI Village Campus- Historic 1942-'43





# WHOI Village Campus- Proposed





# WHOI Village Campus- Overlay Existing Conditions

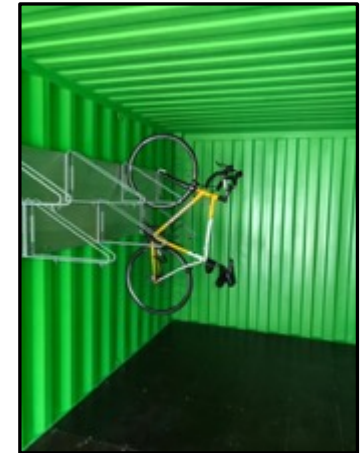


# Village Campus- Proposed Signage

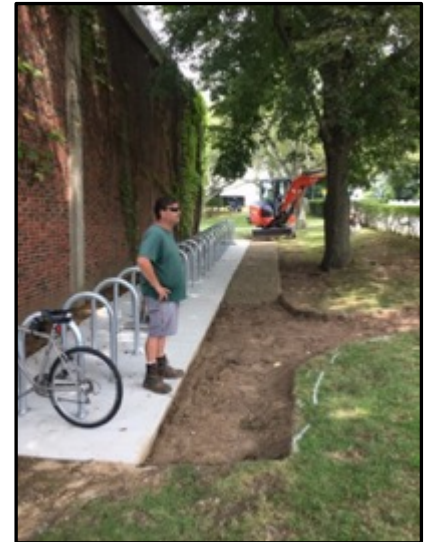




# WHOI's Bike Loaner Program



# Bike Rack Partnership



WHOI shared costs  
with Bikeways  
Committee in 2017



# Ride Share Program

## Want to Meet Your Match?

**February 14, 12-1:00pm**  
**Meigs Room in MBL's Swope Center**

Join MassRIDES for an informal overview of the benefits of carpooling, connect with NOAA, WHOI, SEA, USGS, MBL, and WHRC employees living in your community, and meet your perfect (carpool) match.

**Light refreshments and snacks will be provided!**

### ***Did You Know?***

- Massachusetts is among one of the states with the largest percentage of residents who **walk or bike** to work.
- Taking the **HOV lane** can cut your commute time down by as much as half.
- The overall effects of **public transportation** saves the United States 4.2 billion gallons of gasoline annually.
- More than three-fourths of employees report increased engagement and satisfaction at offices with **flexible workplace practices** and more than two-thirds of employees report increased motivation in similar environments.
- In 2016, over 5,000 people commuted by **ferry** each weekday in Massachusetts.

Questions? Contact MassRIDES Outreach Coordinator Kyle Bonus  
[Kyle.Bonus@dot.state.ma.us](mailto:Kyle.Bonus@dot.state.ma.us)



# Comments

**PLEASE DIRECT YOUR COMMENTS TO**

[facilities@whoi.edu](mailto:facilities@whoi.edu)

**INFORMATION AND UPDATES AT**

[www.whoi.edu/facilityupdates](http://www.whoi.edu/facilityupdates)