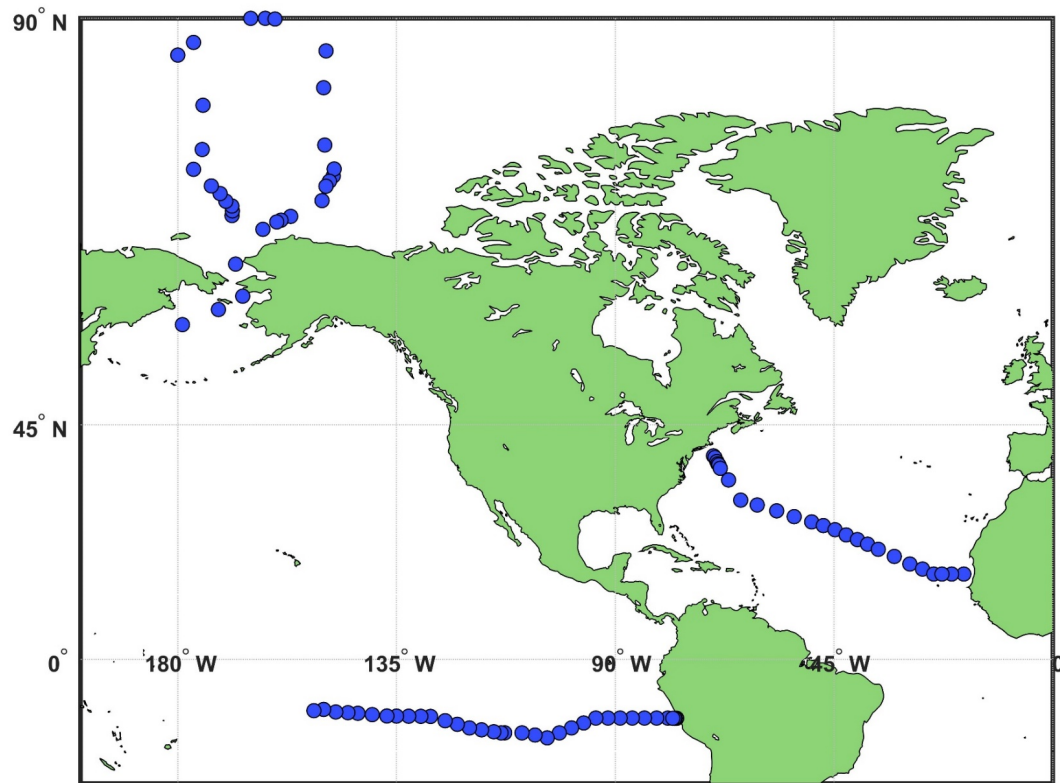


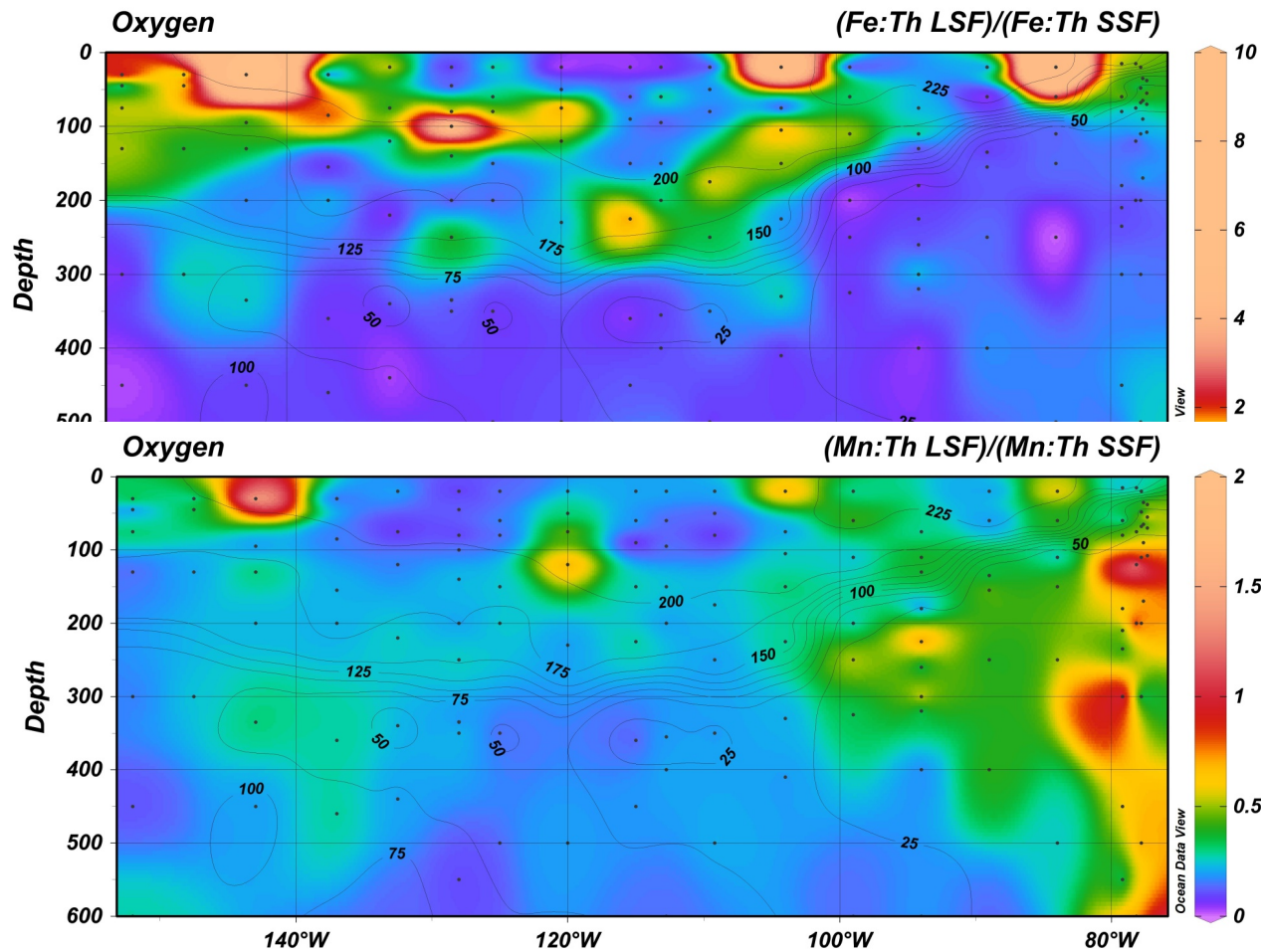
Buesseler and Black...Plan of Attack

in collaboration with Lam (particulate metals) and Charette groups (^{228}Ra)



UPPER OCEAN: Depth, time and space variation of processes and rates?

- Better constraints on bulk export and Th-derived regeneration possible for:
 - Ag, Al, Ba, Cd, Co, Fe, Mo, Mn, Nd, Ni, P, Pb (?), Rh, Sc(?), Sr, Ti, ^{238}U , V, Y, Zn(?)
- Space: 3 basins
- Time: ^{228}Th vs. ^{234}Th



UPPER OCEAN: Large and small size continuum interactions/effects?

- Unprecedented # of samples for assessment of TEI/Th and Th/Th, SSF vs. LSF
- Identify potential controls...implications for upper ocean flux or scavenging studies?