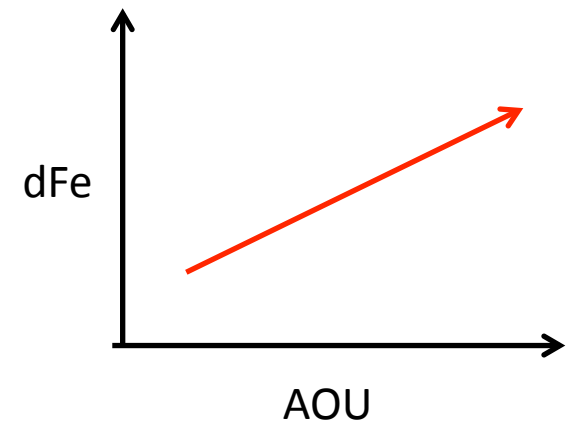
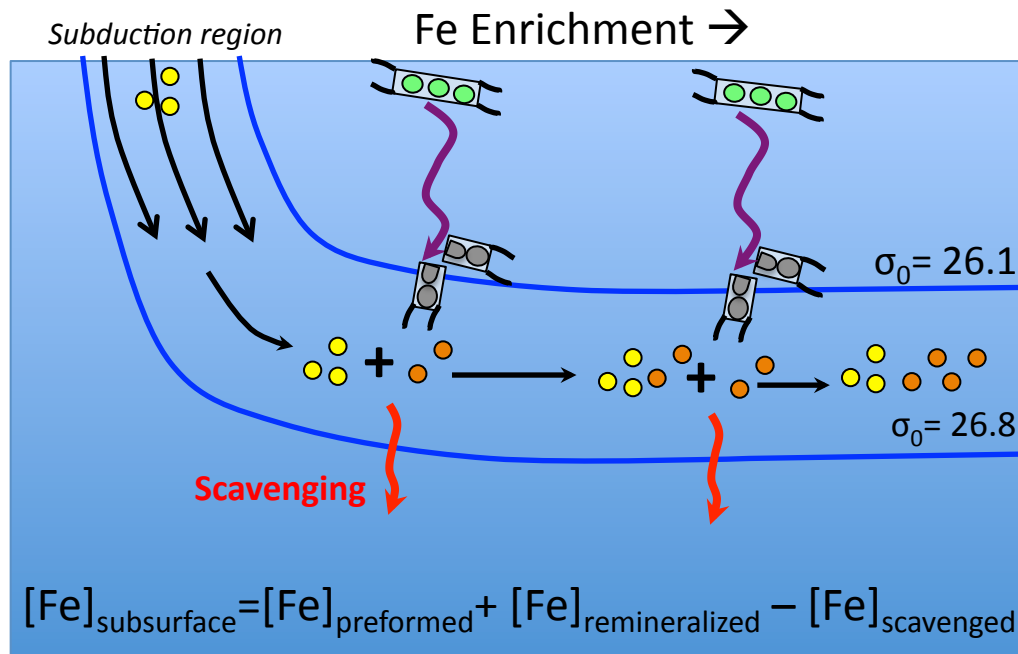
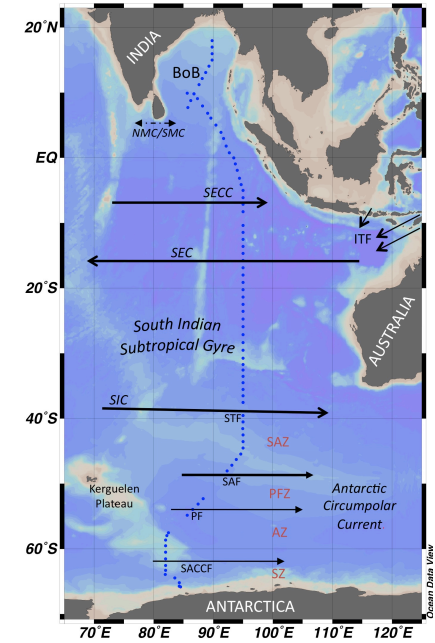
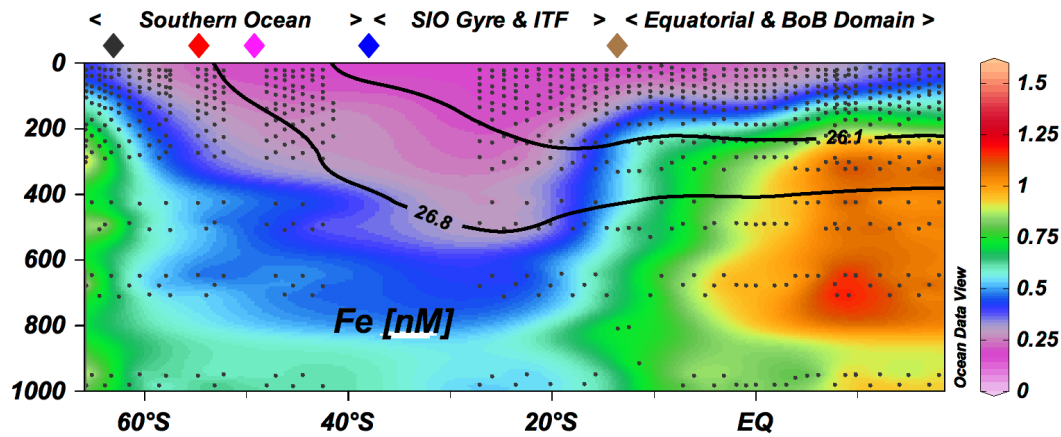


# AOU vs dFe

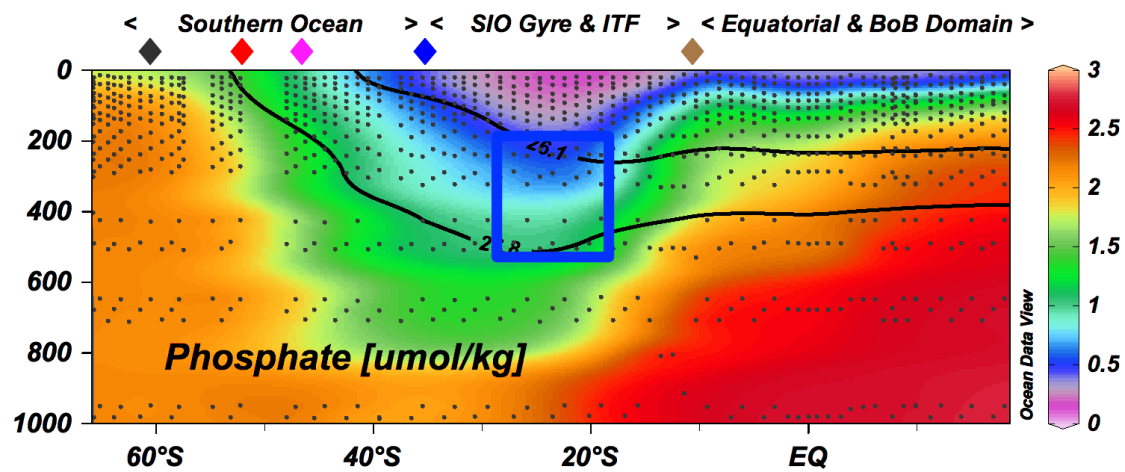
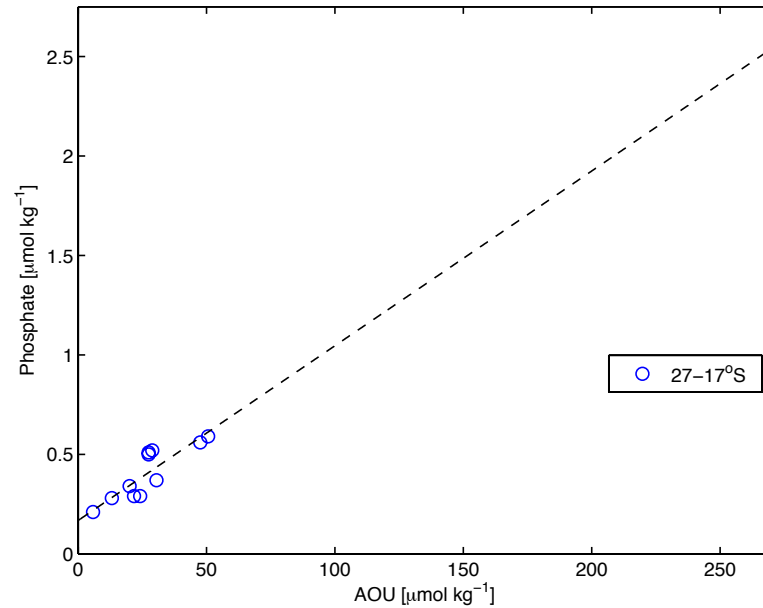
Mariko Hatta & Maxime Grand  
University of Hawaii, University of  
Southampton

# Regeneration in Indian Central Water

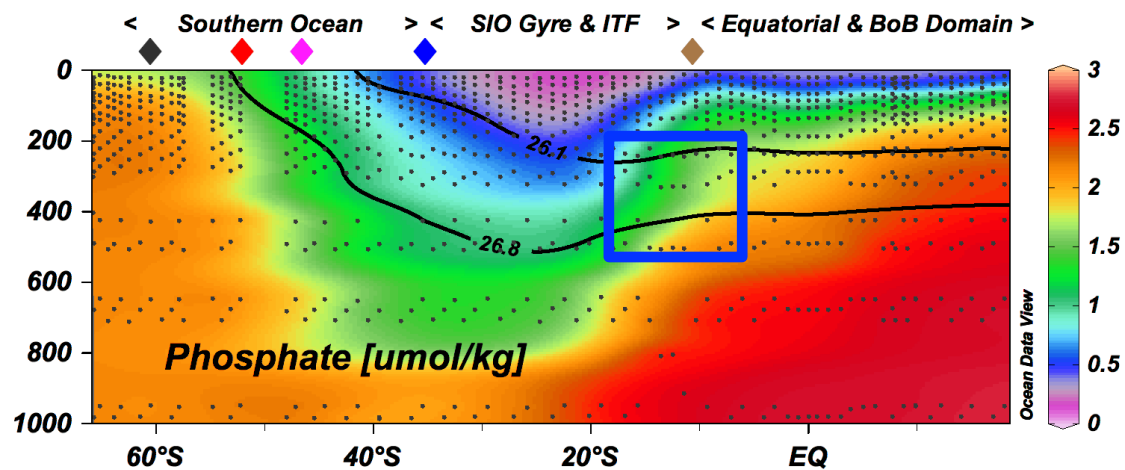
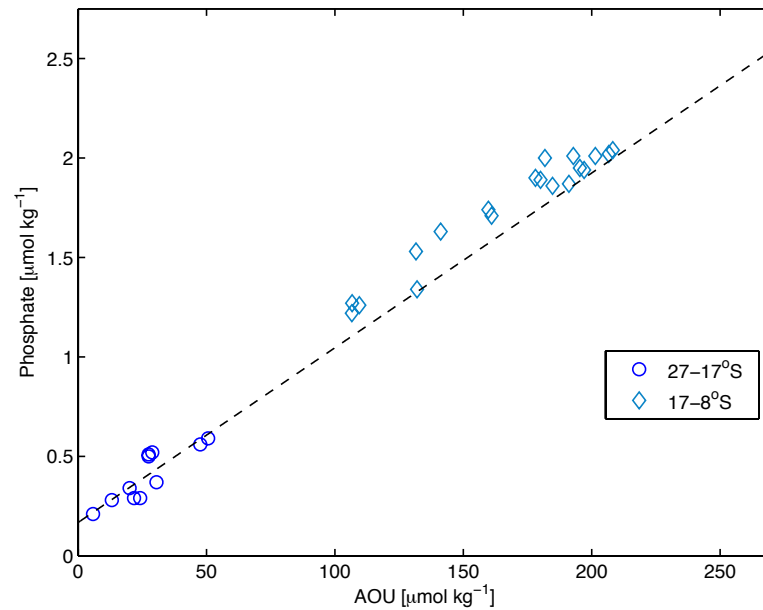


Subtropical Front ~40°S → Bay of Bengal

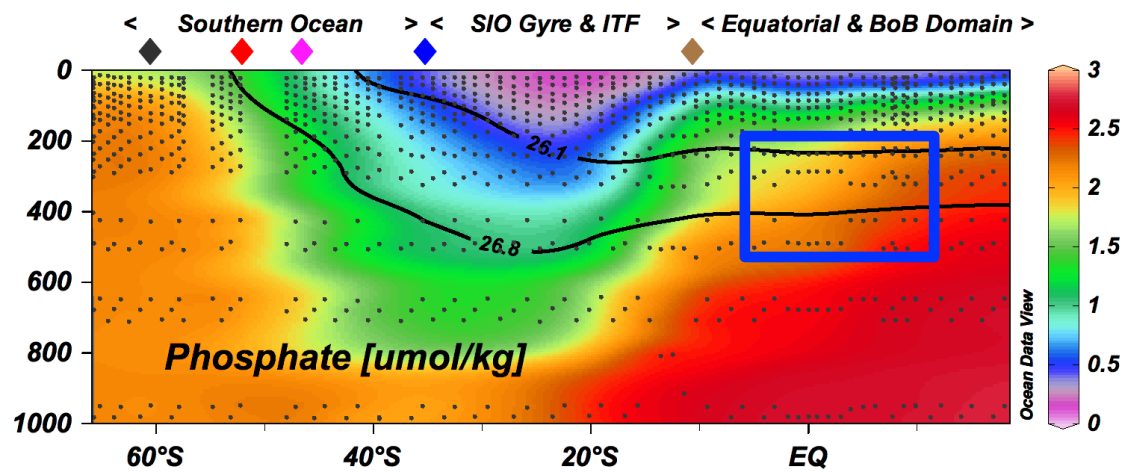
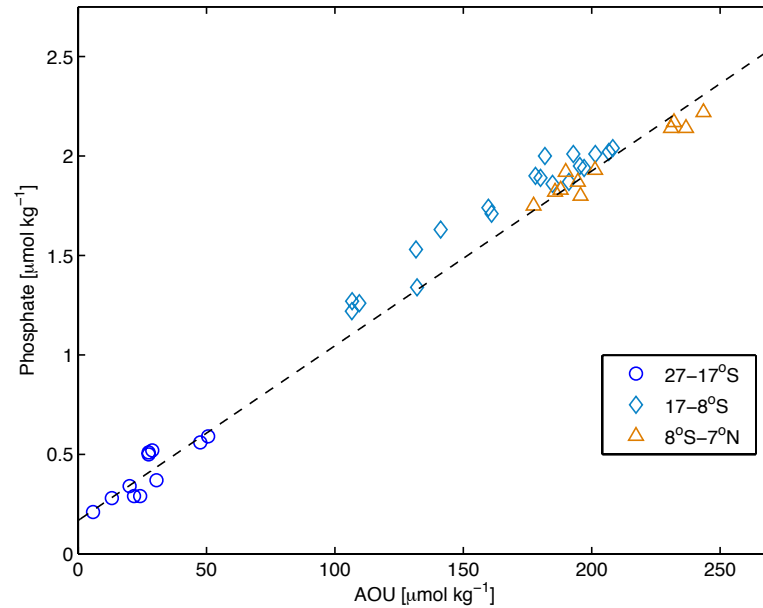
# Regeneration in Indian Central Water



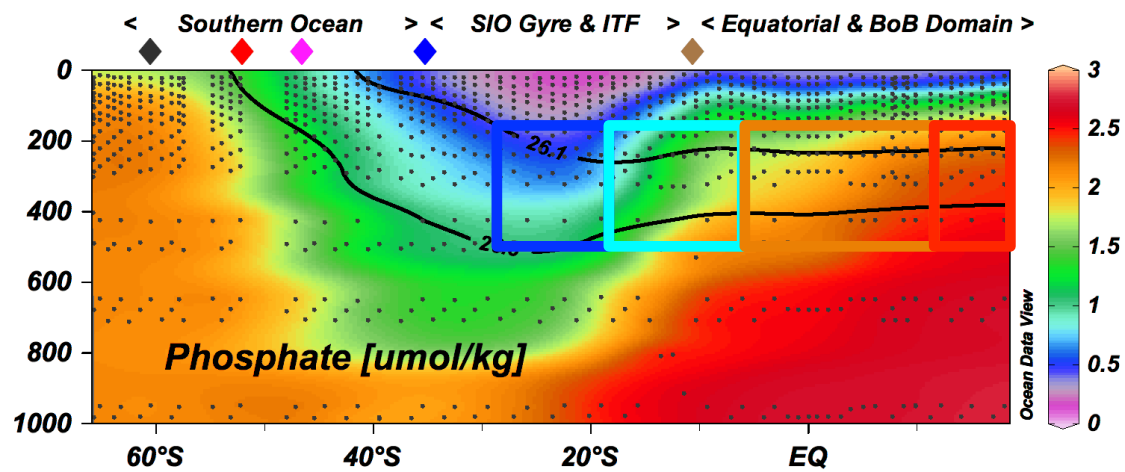
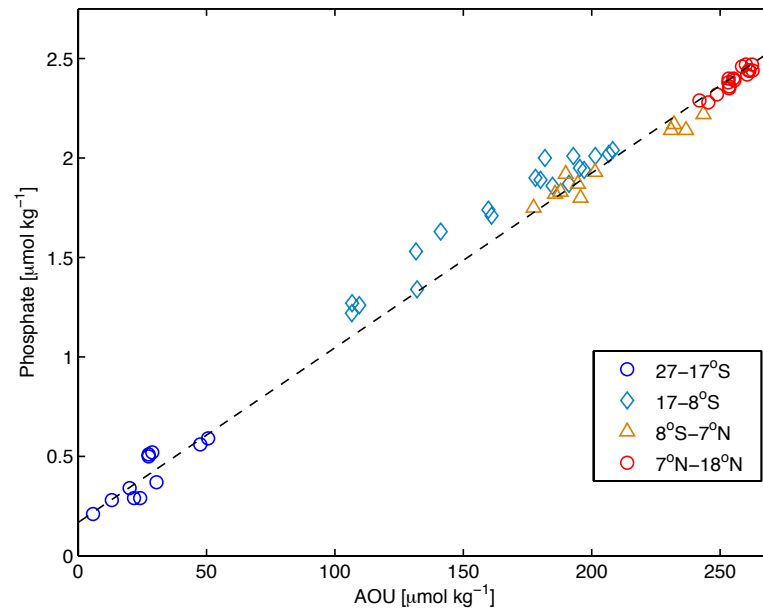
# Regeneration in Indian Central Water



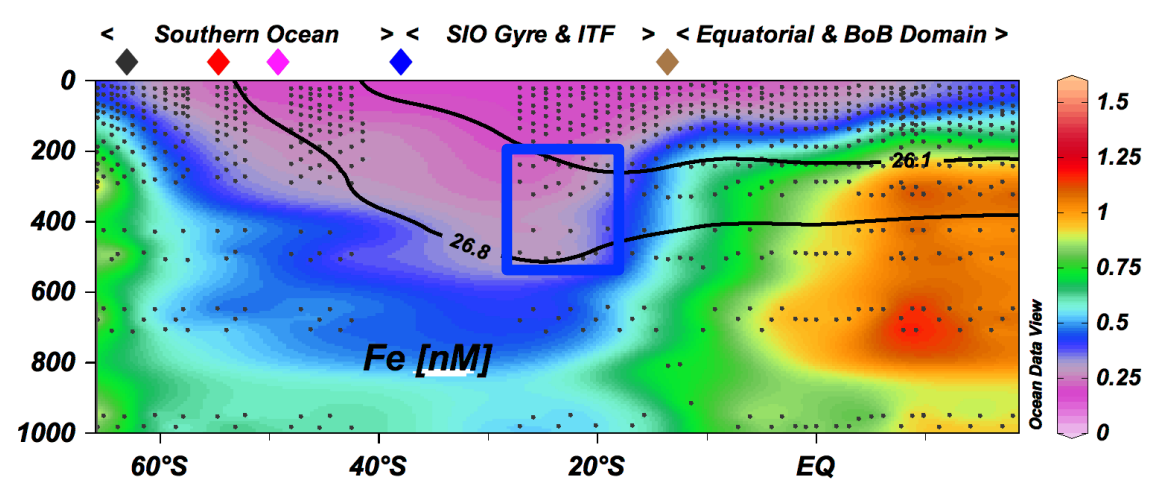
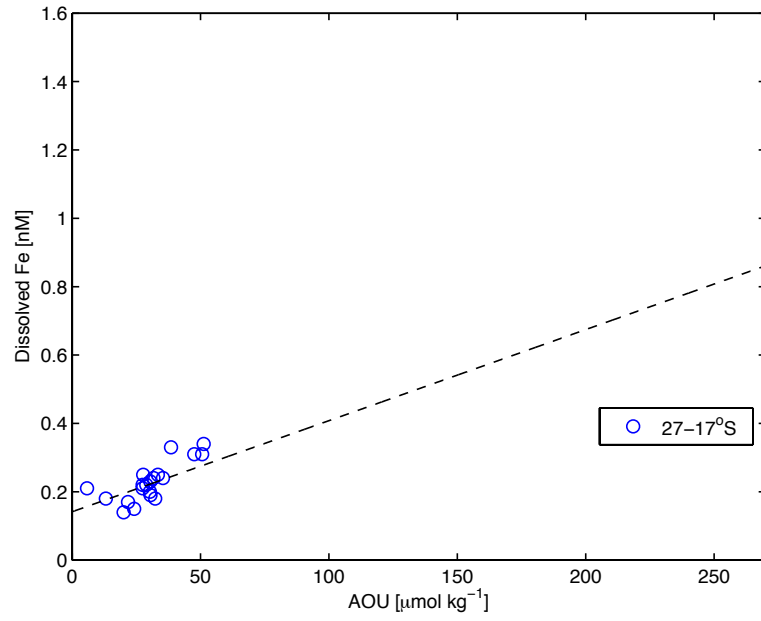
# Regeneration in Indian Central Water



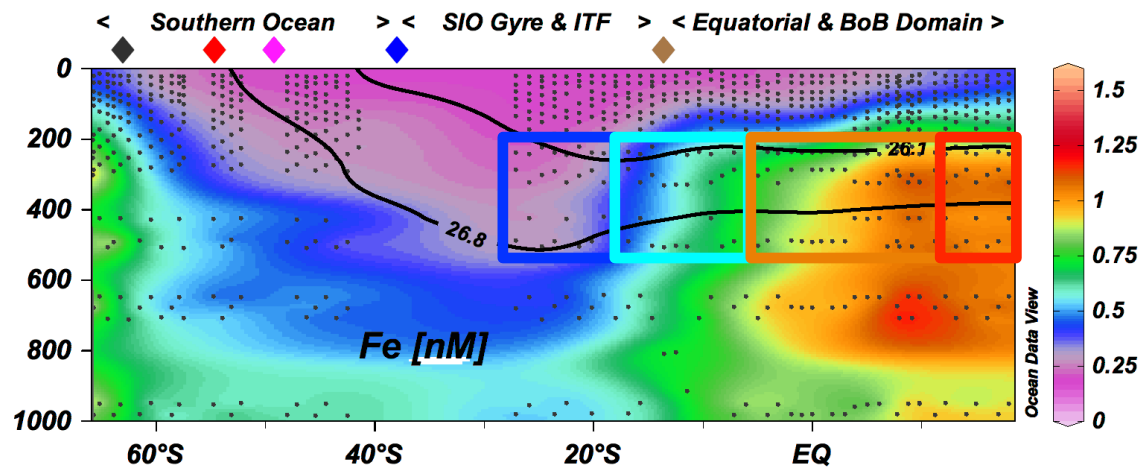
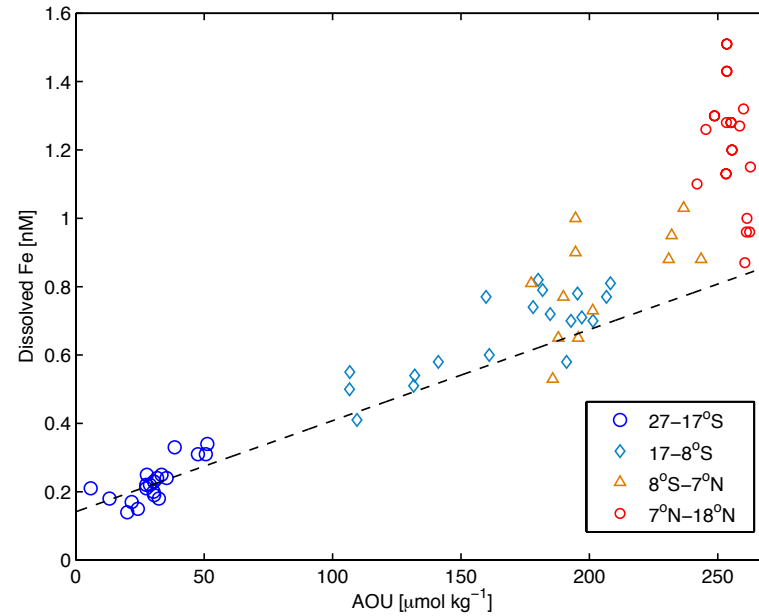
# Regeneration in Indian Central Water



# Regeneration in Indian Central Water

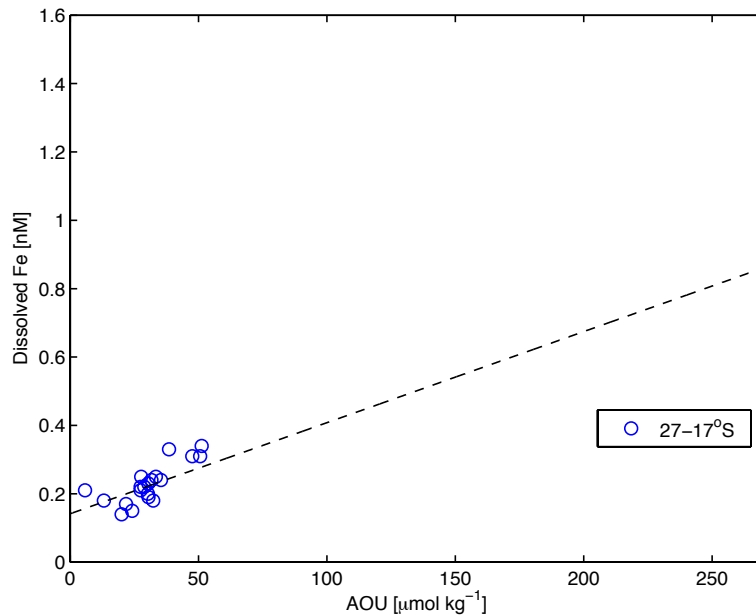


# Regeneration in Indian Central Water





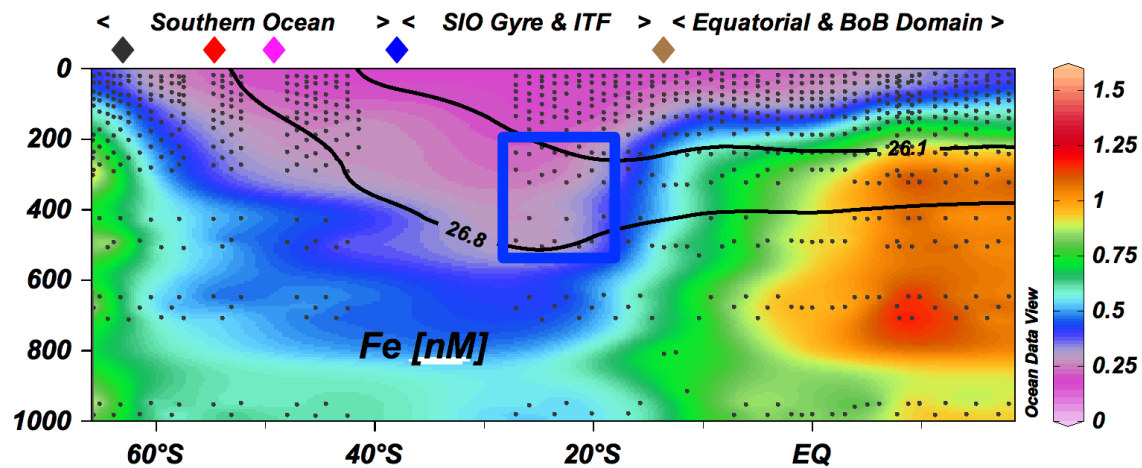
# Regeneration in Indian Central Water

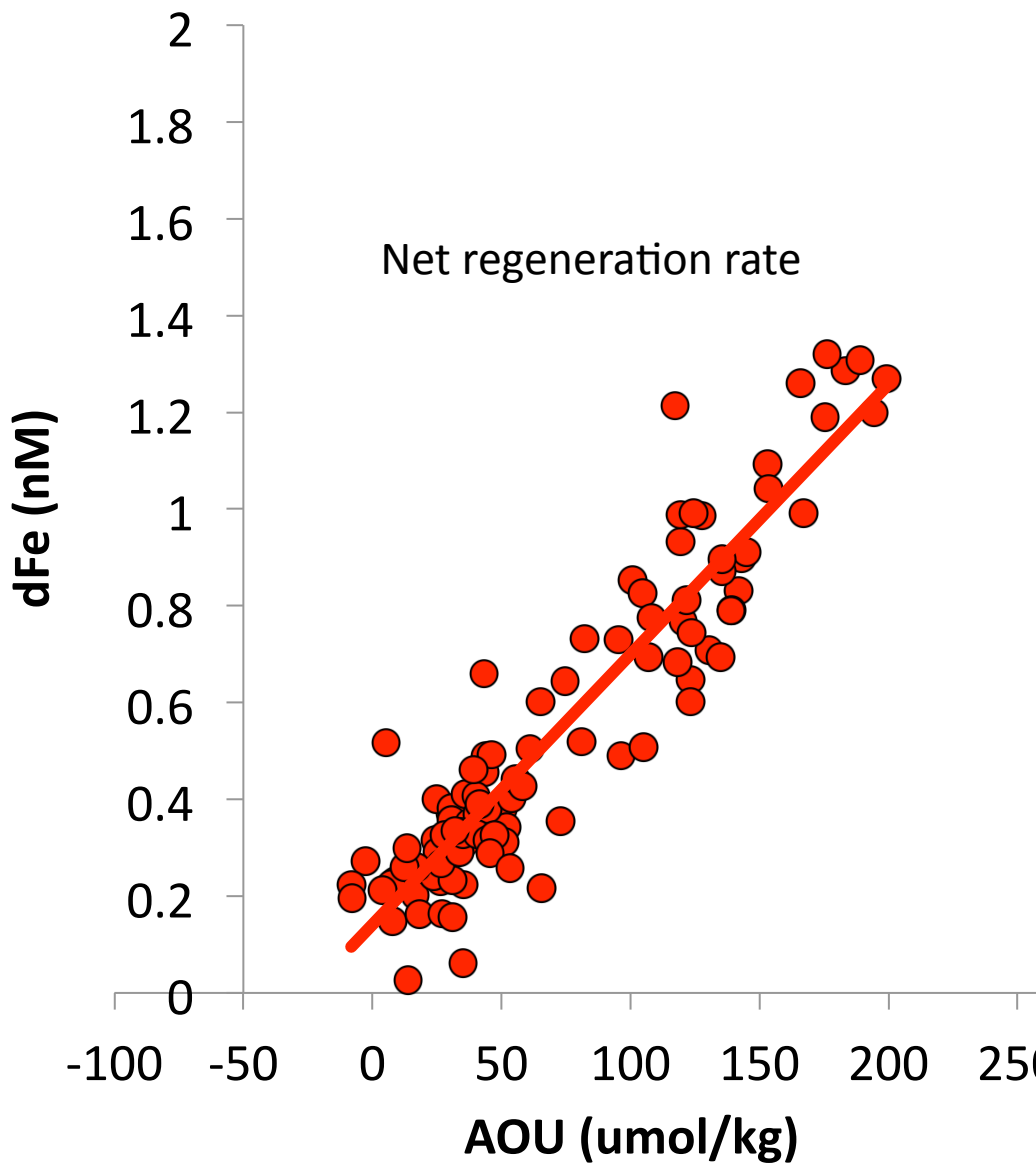


$$\text{Fe:AOU} = 2.7 \pm 0.8 \mu\text{mol mol}^{-1}$$

$$\text{AOU:DIC} = 1.5$$

**→ Fe:C =  $4.1 \pm 1.5 \mu\text{mol mol}^{-1}$**   
in Indian Central Water



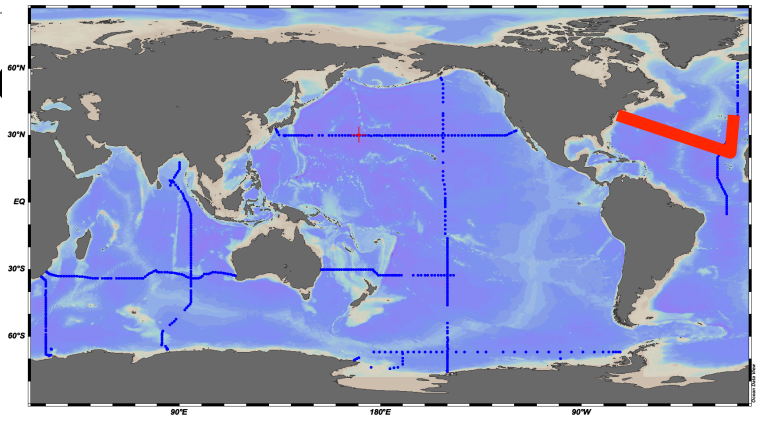


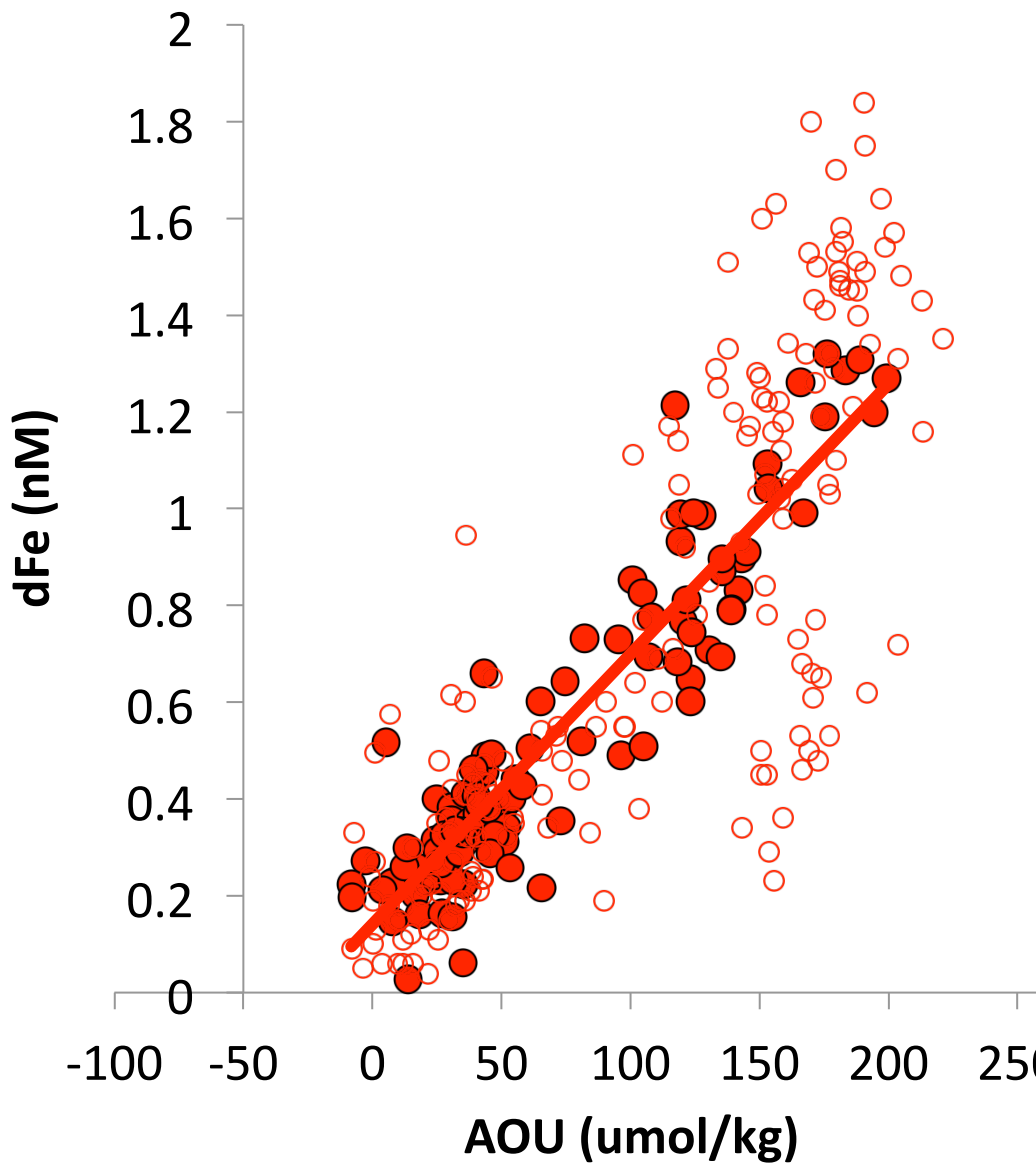
**GA03**  
**100-400m (no GT10-09&-10)**

**$y = 0.0056x + 0.1411$**   
 **$R^2 = 0.86054$**

100-400m, 43S-40N

- GEO\_GA03
- CLIVAR A16N **N. Atlantic O**
- △ CLIVAR A16S **S. Atlantic O**
- × CLIVAR I5 **S. Indian O**
- × CLIVAR P02 **N. Pacific O**



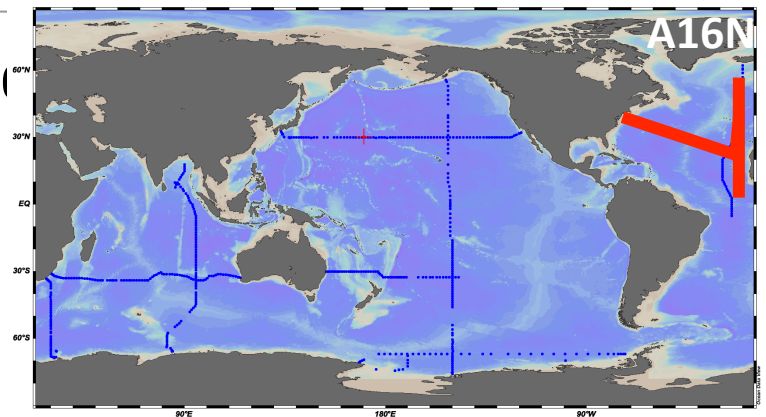


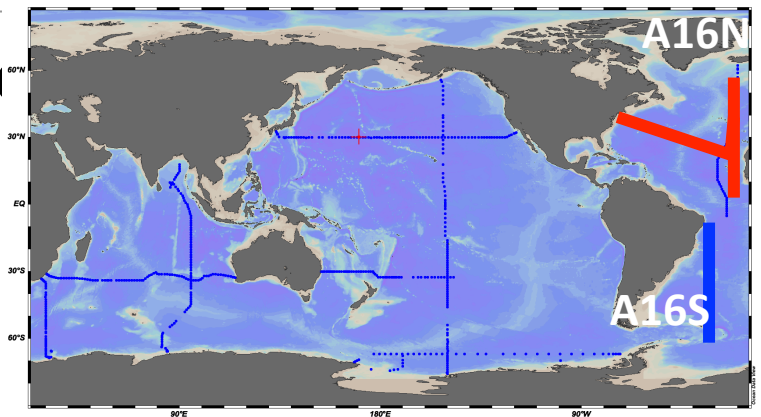
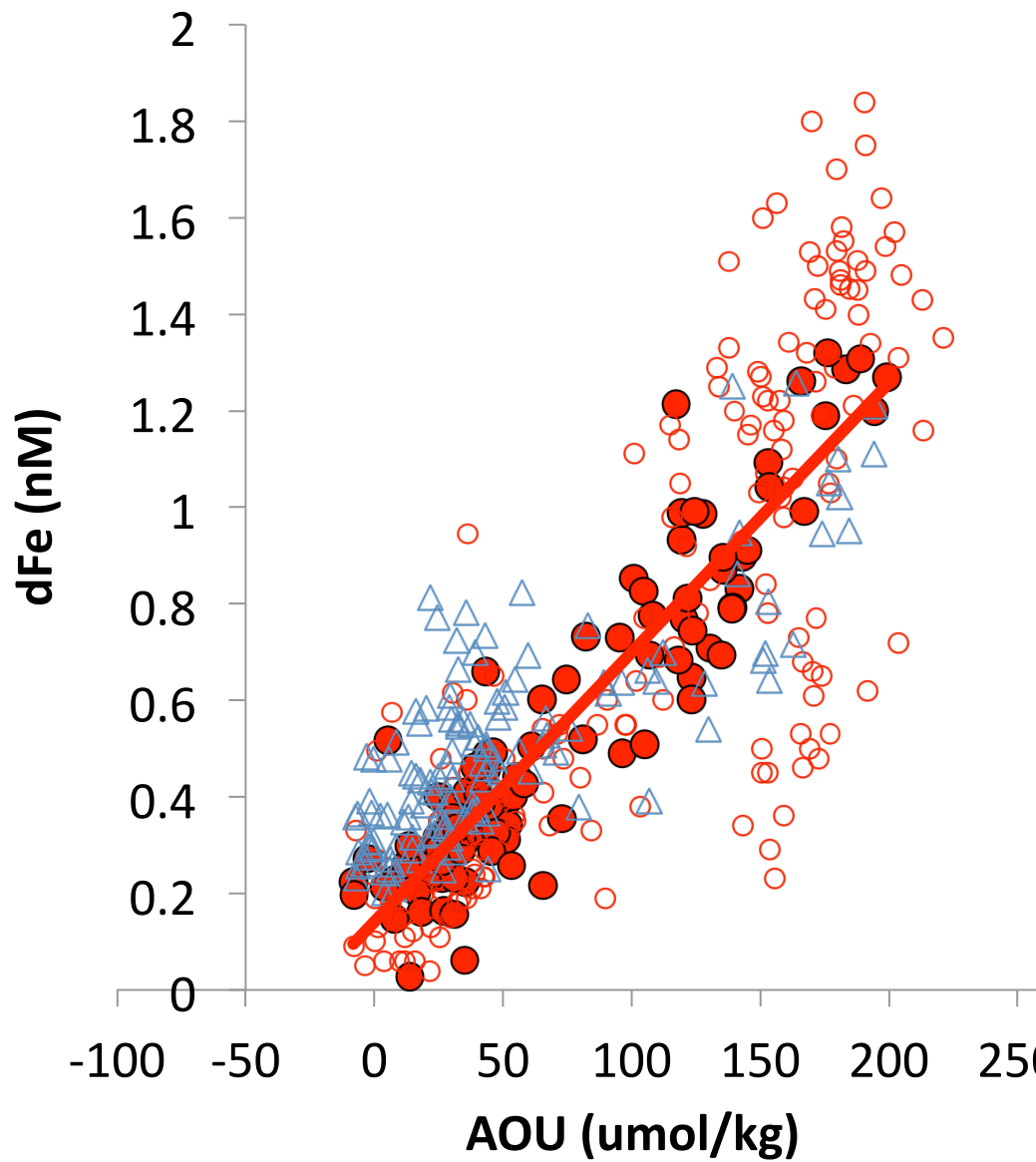
**GA03**  
**100-400m (no GT10-09&-10)**

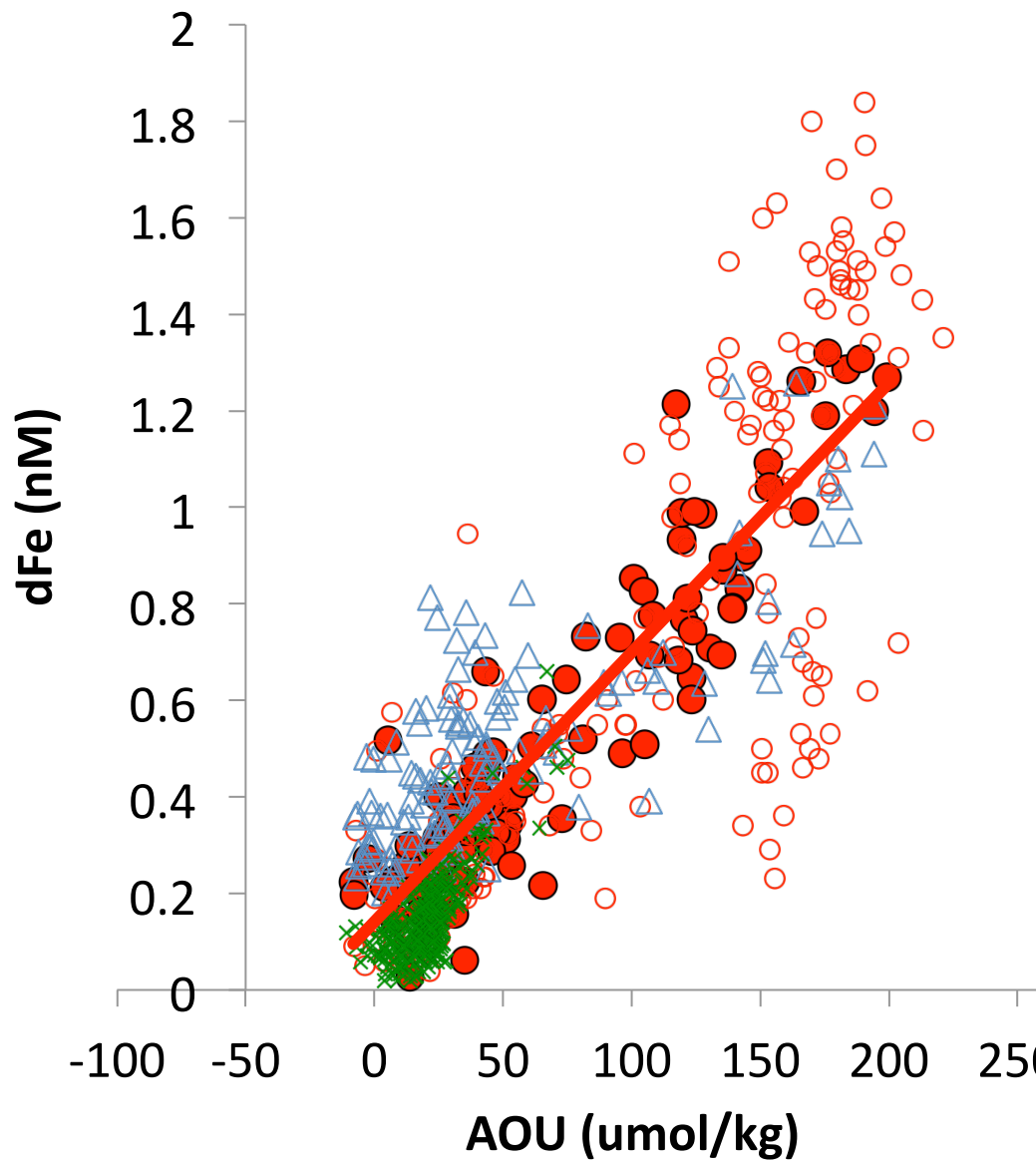
$y = 0.0056x + 0.1411$   
 $R^2 = 0.86054$

100-400m, 43S-40N

- GEO\_GA03
- CLIVAR A16N **N. Atlantic O**
- △ CLIVAR A16S **S. Atlantic O**
- × CLIVAR I5 **S. Indian O**
- × CLIVAR P02 **N. Pacific O**





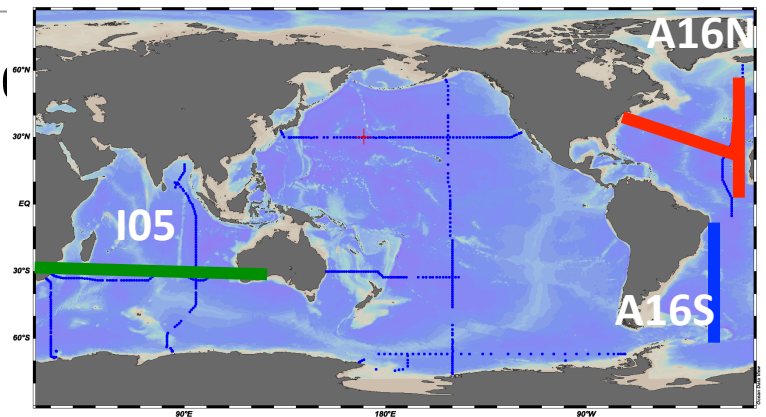


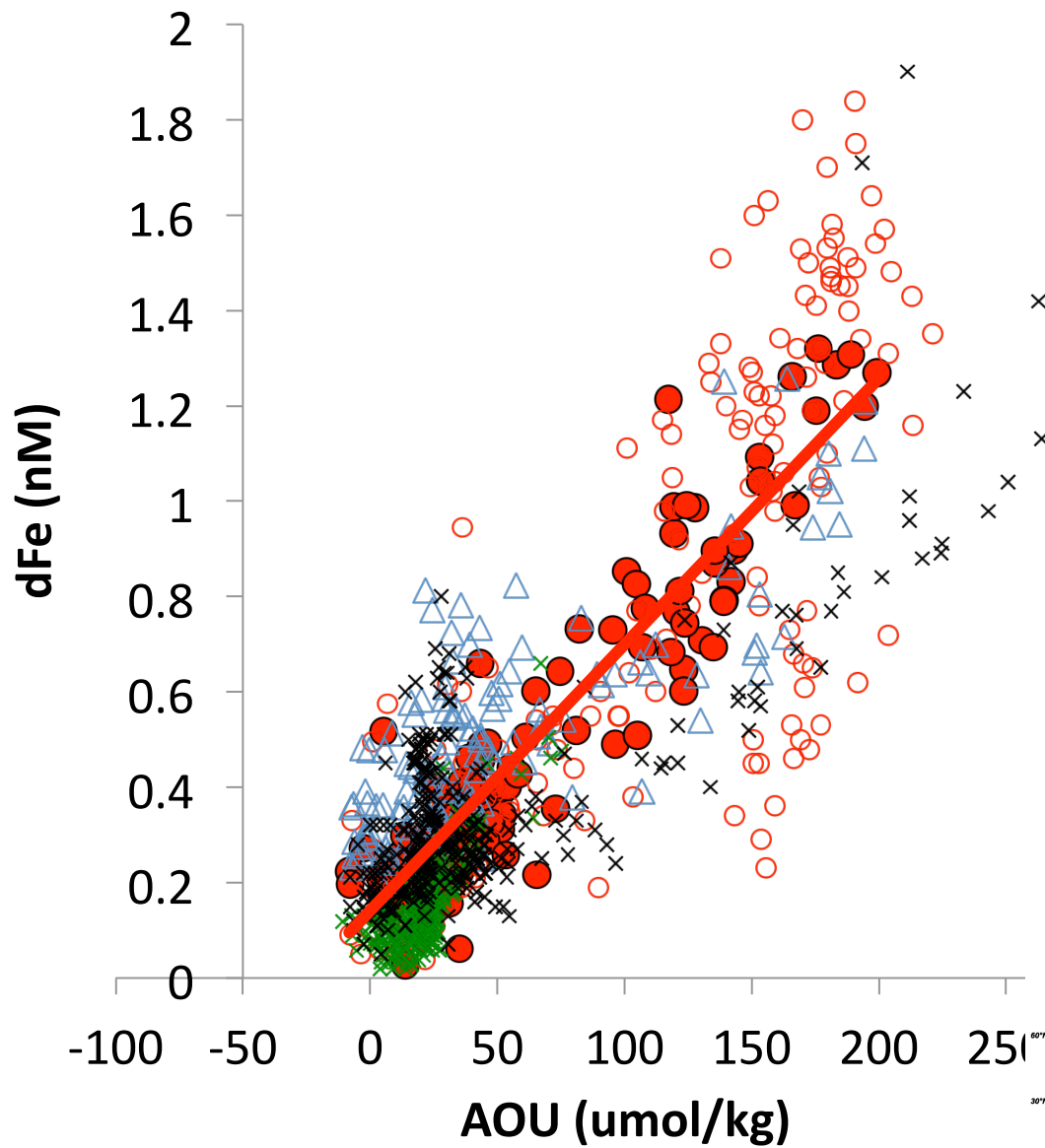
**GA03**  
**100-400m (no GT10-09&-10)**

$y = 0.0056x + 0.1411$   
 $R^2 = 0.86054$

100-400m, 43S-40N

- GEO\_GA03
- CLIVAR A16N **N. Atlantic O**
- △ CLIVAR A16S **S. Atlantic O**
- × CLIVAR I5 **S. Indian O**
- × CLIVAR P02 **N. Pacific O**



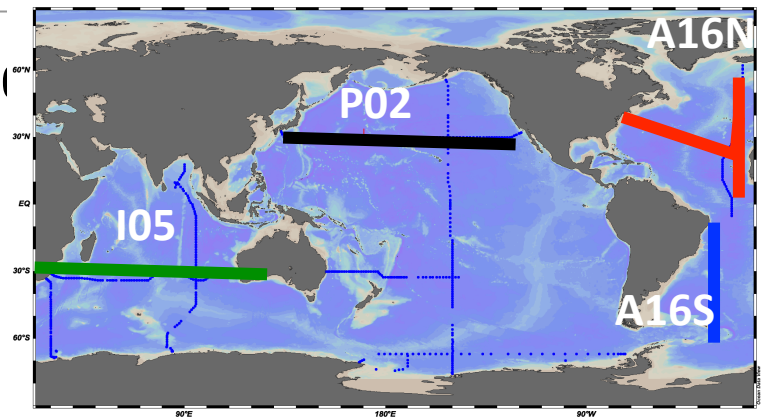


**GA03**  
**100-400m (no GT10-09&-10)**

$y = 0.0056x + 0.1411$   
 $R^2 = 0.86054$

100-400m, 43S-40N

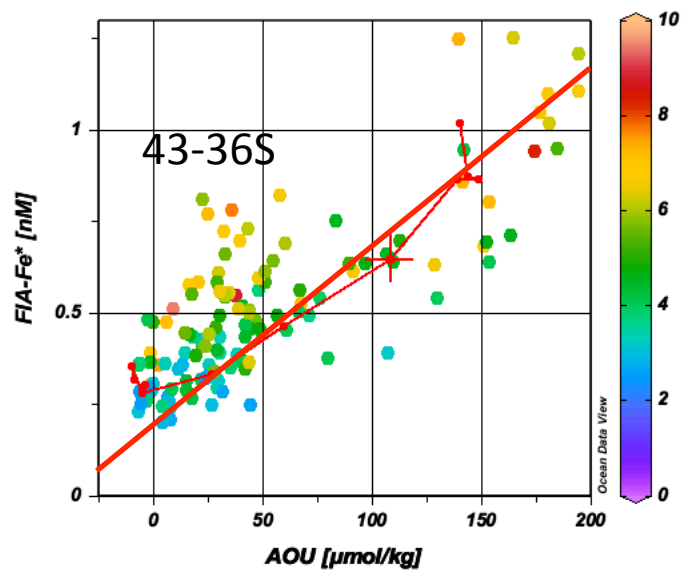
- GEO\_GA03
- CLIVAR A16N **N. Atlantic O**
- △ CLIVAR A16S **S. Atlantic O**
- × CLIVAR I5 **S. Indian O**
- × CLIVAR P02 **N. Pacific O**



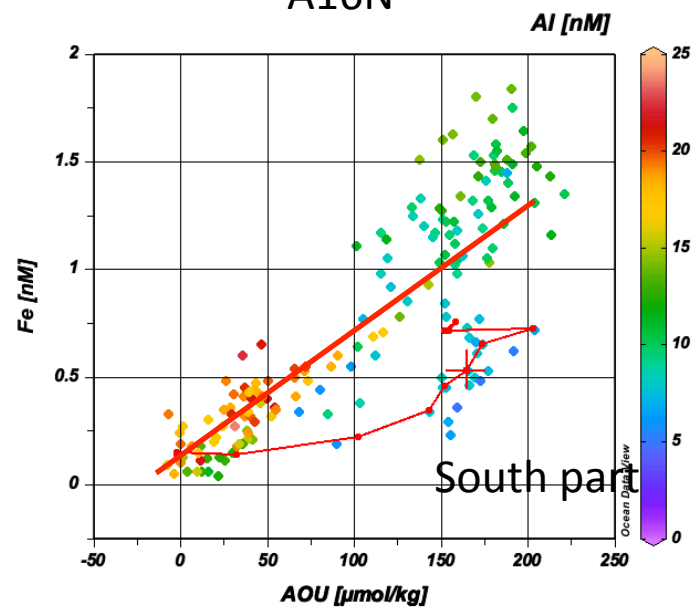
this is a preliminary data, Yes... this is a bit of mess.. and need to identify water mass and classify individual regenerated rate and preformed Fe etc...

It will be interesting to compare the net regeneration rate with the cell stoichiometry data.

A16S



A16N



P02

