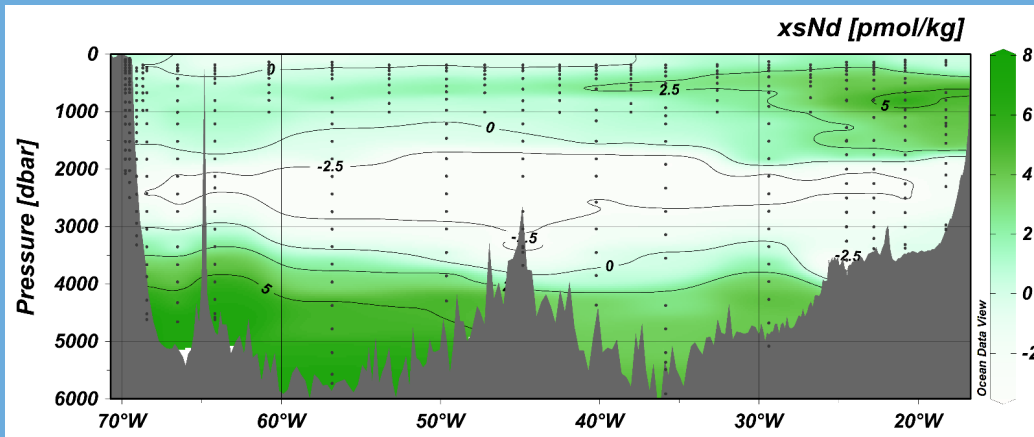
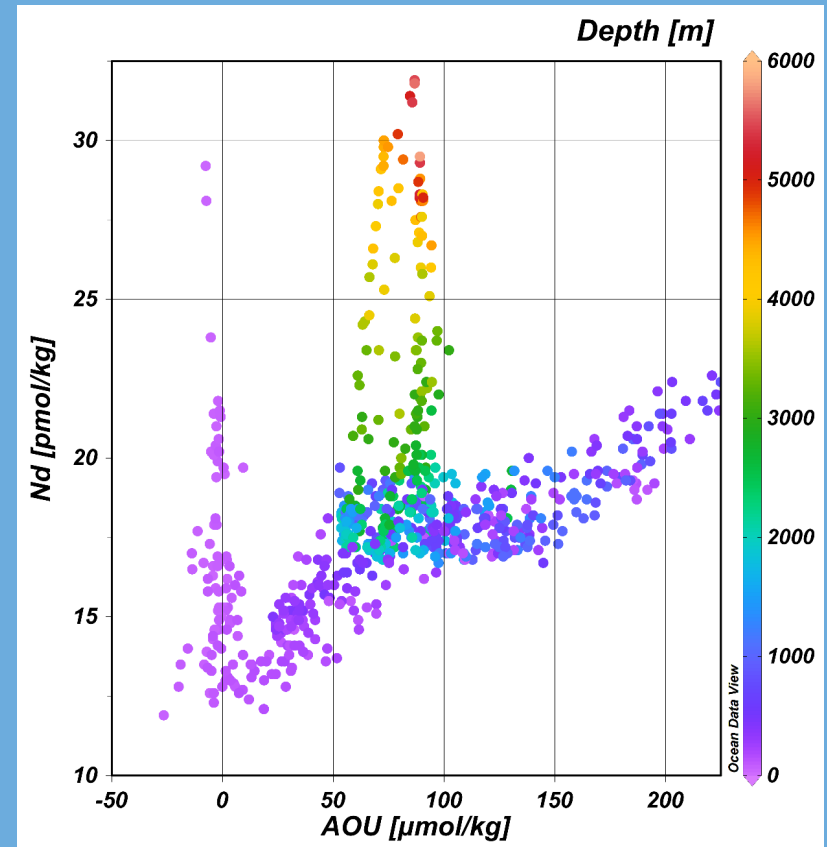
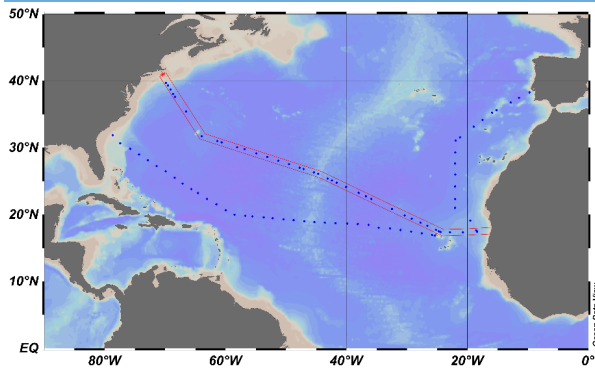


Typical Nd & Yb profiles in North Atlantic above MAR (red circles), western basin (green squares), eastern basin (magenta diamonds)

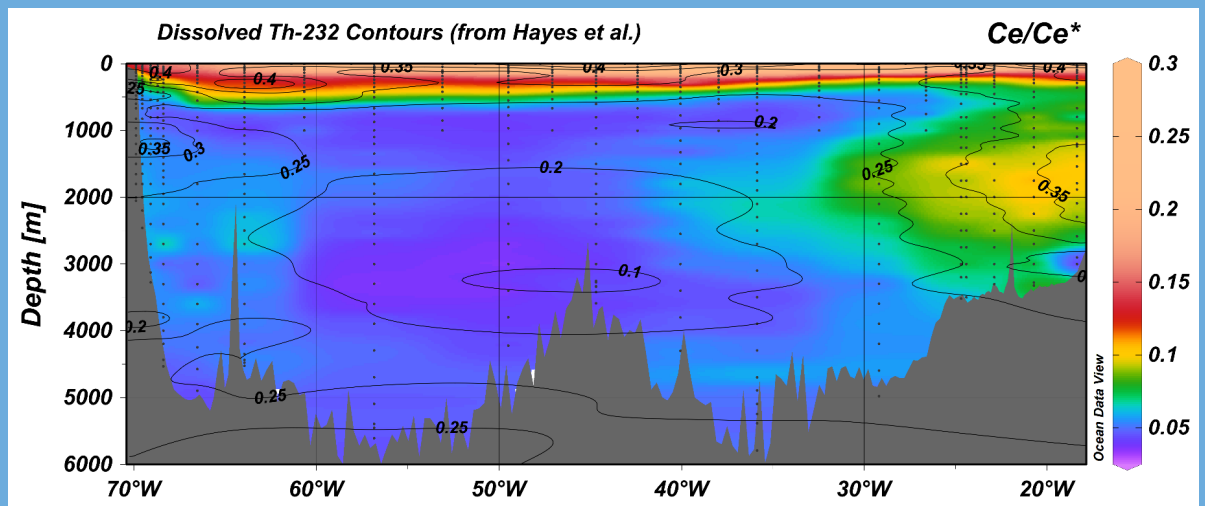
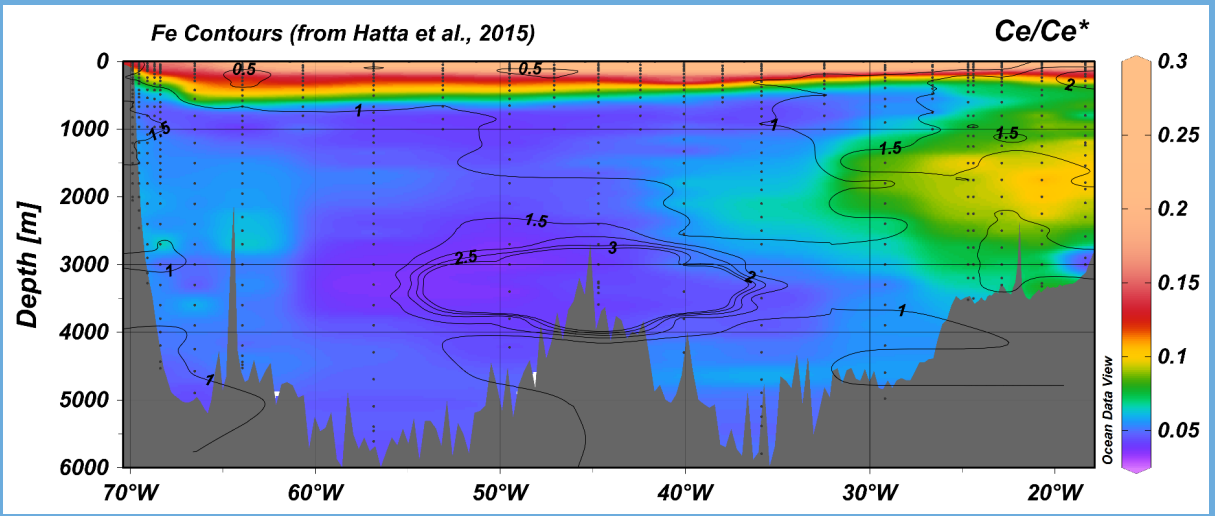
$$xsNd = [Nd]^{meas.} - [Nd]^{cons.}$$



Similar to results of Stichel et al., 2015 & Zheng et al., 2016



“Stichel et al. plot”



Dissolved La and La/Yb in the vicinity of Deepwater Horizon

